

LAHONTAN GOLD CORP

*Nevada's Walker Lane
A Target Rich Environment*

TSX:V-LG; OTCQB:LGCF

**LARGE-SCALE GOLD OXIDE DEPOSITS
WALKER LANE, NEVADA USA**

**1.11 MILLION OUNCES INDICATED AND 0.55 MILLION OUNCES INFERRED
PIT CONSTRAINED RESOURCE**



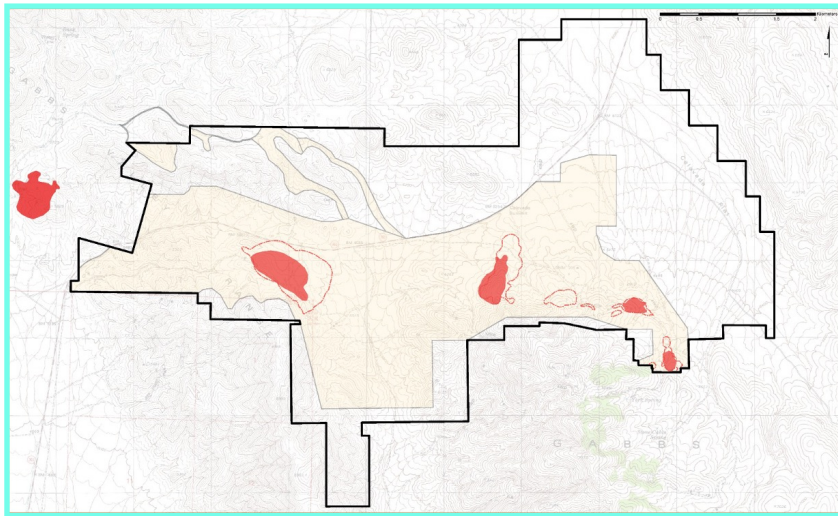
SANTA FE MINE– Average grade 1.12 g/t Au Eq*

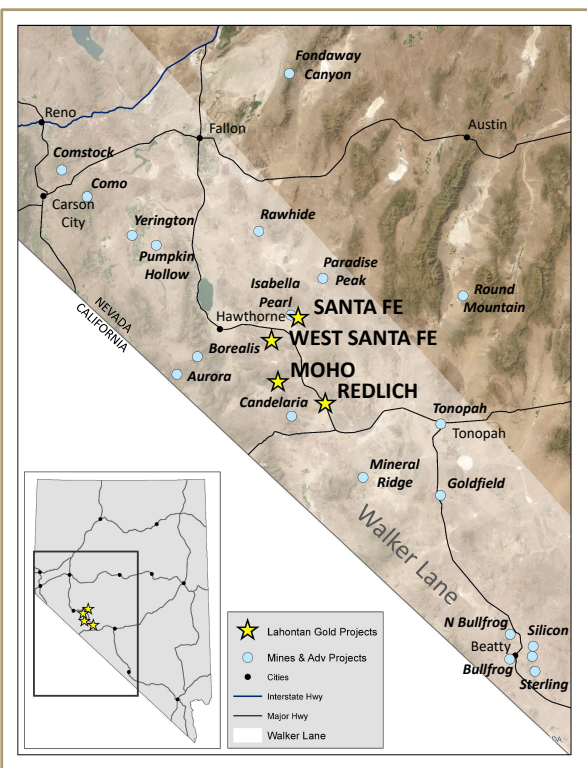
LOW COST HEAP LEACH OPEN PIT OPERATION

- Mine under closure with access to water, power, & infrastructure needed to fast-track back into production
- Historic production of 345,499 ounces Au & 710,629 ounces of Ag showed > 70% recoveries with 1.1 g/t Au Eq grade*
- Indicated and Inferred Resources occur in five separate deposits, all pit constrained by conceptual pit shells: Santa Fe, Slab, Calvada Central and East, York*

SANTA FE DISTRICT – Baseline Studies & Plan Of Operations

- Studies used in a Plan of Operations (“POO”) covering a 12.2 km² area
- Includes studies of botanical, raptor, & cultural resources
- Pathway to Production & Resource Expansion
- This permit allows LG to streamline the process to go back into production & drill project wide
- During the study period exploration will continue under a NOI





TOP SHELF PROJECTS IN A “TIER 1” JURISDICTION

Multi-Million Ounce Gold and Silver District
Straight Forward Permitting

FOUR GOLD & SILVER ASSETS IN THE WALKER LANE

SANTA FE MINE-Heap leach oxide gold and silver operation

WEST SANTA FE PROJECT-Gold and silver satellite adjacent to our flagship asset

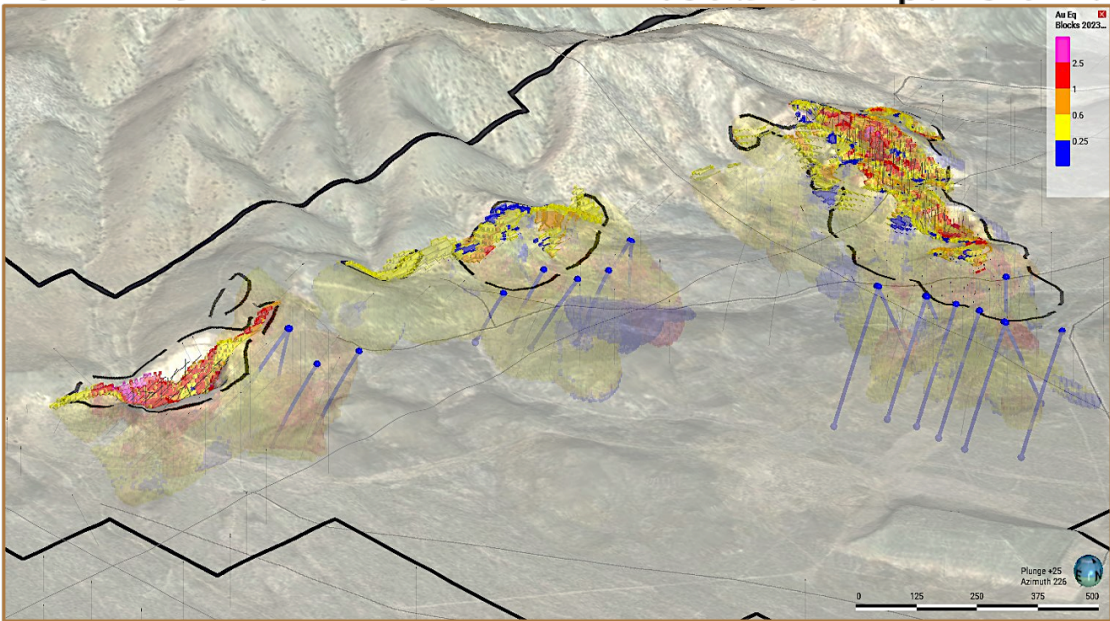
MOHO PROJECT-High grade underground gold and silver mine

REDLICH PROJECT-Silver focused asset adjacent to the historic Candelaria Silver Mine

MANAGEMENT & BOARD- PROVEN TRACK RECORD

Significant Exploration Success as well as production
Strong support, Victoria Gold 34% stakeholder,
Management ownership 10%

SLAB CALVADA COMPLEX Resource Expansion through the drill bit



- ✓ **Release Maiden MRE Q1 2023**
- ✓ Resource expansion through the drill bit targeting +3,500 metres; short term goal: Dramatically expand oxide ounces
- Focus on Slab-Calvada Complex
- Updated Resource Estimate in early 2024

PROFORMA CAPITALIZATION TABLE		
Shares Outstanding	(Shares)	146.8 M
Market Capitalization	(C\$M)	\$11.7 M
Options & Warrants		57.4 M
Cash	(C\$M)	\$2.6 M
Debt	(C\$M)	\$0

STRONG BOARD & MANAGMENT	
JOHN MCCONNELL	CHAIR
KIMBERLY ANN	FOUNDER CEO & DIRECTOR
BRIAN MAHER	FOUNDER VP EXPLORATION
JOHN MCNEICE	CFO
CHRIS DONALDSON	DIRECTOR
BOB MCKNIGHT	DIRECTOR
JOSH SERFASS	DIRECTOR

