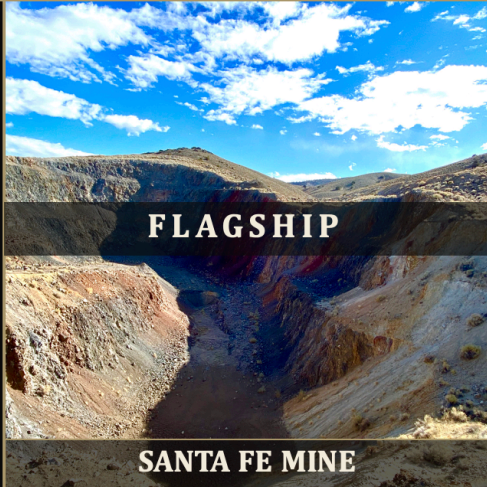


Nevada's Santa Fe Gold Mine: On Track to Production

LARGE-SCALE GOLD OXIDE DEPOSITS WALKER LANE, NEVADA USA

GOLD & SILVER ASSETS IN THE WALKER LANE



FLAGSHIP

SANTA FE MINE

PAST PRODUCER

- OPEN PIT, HEAP LEACH GOLD & SILVER
- US\$472M POST TAX NPV^{5*}
- POST TAX IRR: **66.6%***



SATELLITE

WEST SANTA FE

SATELLITE ASSET

- OXIDE STARTS AT THE SURFACE
- ONLY 13 Km AWAY FROM OUR FLAGSHIP



HIGH GRADE

MOHO MINE

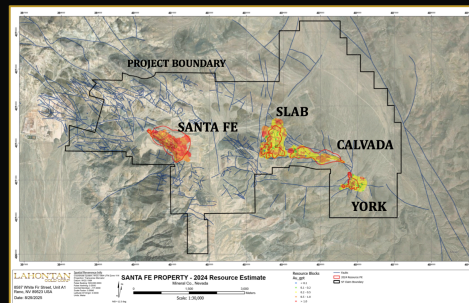
GOLD & SILVER

- MULTIPLE VEIN SYSTEM
- HISTORIC GRADES 25 g/t GOLD & 300 g/t SILVER

WALKER LANE, NEVADA CHECKING ALL THE BOXES

- ✓ **NEVADA**
 - # 1 Jurisdiction in the USA
 - Straight-forward permitting
- ✓ **SIZE & SCALE**
 - 1.95 Million Ounces a Growing*
 - District scale land package
 - Multi million-ounce district
- ✓ **EXCELLENT INFRASTRUCTURE**
 - Year-round access, substation on site, access to three water wells
 - Adjacent to an operating mine
- ✓ **PAST PRODUCER**
 - Santa Fe was mined from 1988-1994 by Corona Gold
 - LG on track to Production, permitting well underway
- ✓ **BACK TO PRODUCTION**
 - Estimated timeline to production: 2027

*Please see Santa Fe Project Technical Report for detailed Mineral Resource Estimate.



SANTA FE LAND PACKAGE, GOLD & SILVER RESOURCES

*Please see Santa Fe Project Technical Report for detailed Mineral Resource Estimate.

UPDATED RESOURCE ESTIMATE: 1.54 MILLION OUNCES INDICATED AND 0.41 MILLION OUNCES INFERRED PIT CONSTRAINED RESOURCE*

- AVERAGE GRADE 0.93 g/t Au Eq**
 - District scale land package - 28 km²
- INDICATED AND INFERRED RESOURCES**
 - Occur in five separate deposits
 - Resources constrained by conceptual pits using a \$1950 gold price
- OXIDE DOMAIN RESOURCES**
 - Indicated Au Eq oxide: 640,000 oz grading 0.68 g/t Au Eq*
 - Inferred Au Eq oxide: 219,000 oz grading 0.53 g/t Au Eq*
- HISTORIC PRODUCTION BREAKDOWN**
 - 359,202 ounces Au
 - 702,067 ounces of Ag with 1.1 g/t Au Eq average grade

100% Controlled SANTA FE MINE PATHWAY TO PRODUCTION



**SANTA FE MINE PEA*: LOW CAPEX, LOW COST, RAPID PAYBACK
WALKER LANE, NEVADA USA**

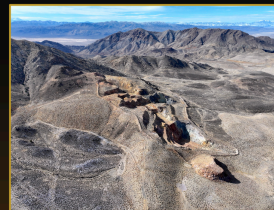
- Capex of US\$135 M including a 20% contingency
- 12,500 tpd, 8 year project life
- Low cash costs
- Excellent NPV, IRR
- Rapid payback

Study published in December 2024 Done with \$1950 Pit shells



- Huge trading volumes equals HUGE liquidity: (30 Days)

Canada: 2.6 M shares/day
US: 0.7 M shares/day
TOTAL VOL: 3.3 M shares/day

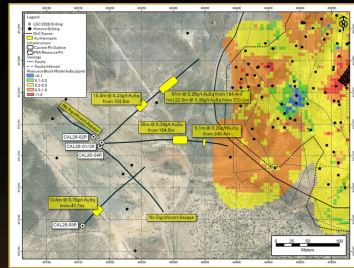
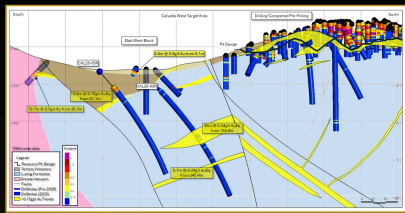


**LAHONTAN REVALUATION UNDERWAY
UP 7X YTD**

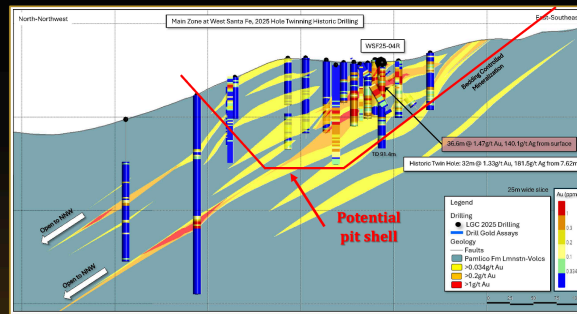


Au Price (US\$)	Ag Price (US\$)	NPV ² Post Tax (M US\$)	IRR Post Tax (%)	Payback (Yrs)
\$2025	\$24.2	\$56.5	14.0%	4.2
\$2705	\$32.6	\$200.0	34.2%	2.9
\$3,000	\$37.5	\$263.2	42.2%	2.6
\$3,500	\$43.8	\$368.0	54.9%	2.1
\$4,000	\$49.5	\$471.6	66.6%	1.8

NEW WEST SLAB GOLD DISCOVERY



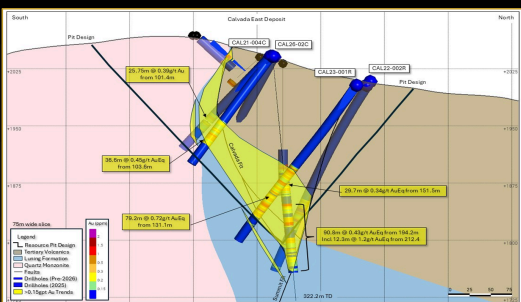
WEST SANTA FE RESULTS CONFIRM HISTORIC DRILLING 3.11 g/t Au Eq over 37m from the surface, OXIDE



- NEW GOLD ZONE DISCOVERED AT WEST SLAB IN 2026 DRILLING
- 35.0 metres grading 0.34 g/t Au Eq (CAL26-03R; 164.6 – 199.6 m) and 61.0 metres grading 0.26 g/t Au Eq (CAL26-01R; 184.4 – 245.4 m)
- Unconstrained up and down dip plus along strike, EXCELLENT POTENTIAL FOR NEW GOLD RESOURCES

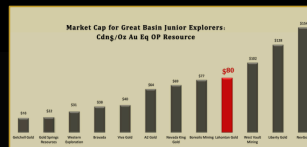
- WSF25-04R: 36.6 metres grading 3.11 g/t Au Eq including 10.7 metres grading 5.75 g/t Au Eq from the surface, all oxide

CALVADA 2026 DRILL RESULTS

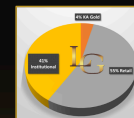


- Core drill holes originally designed to gather data for mine permitting
- Drill hole CAL26-02C, cut 90.8 metres (194.2 – 285.0 m) grading 0.44 g/t Au Eq oxide
- Intercept is near the bottom and below the current resource pit shell.
- Confirms expansion potential of the Calvada deposit

Average is \$69MC per resource ounce



KEY SHAREHOLDERS:
 > KA GOLD (Founders)
 > MERK
 > EMA (Larry Leopard)
 > APAC
 > PALOS



LAHONTAN CORPORATE SNAPSHOT

SHARE STRUCTURE	
Shares Issued and Outstanding	(Shares) 432.3M
Market Capitalization (April 2026)	(C\$M) Basic: \$172.9M FD: \$192.4M
Warrants	27.1M @ Ave 45 cents
Options	30.5M @ 22 cents
Cash	(C\$M) \$19.3M
Debt	(C\$M) \$0

NEWSLETTER WRITERS
 > Brian Lundin
 > Jay Taylor
 > Don Durrett

ANALYST & BANKING SUPPORT



Brian J. Maher, M.Sc., CPG-12342, is a "Qualified Person" as defined under Canadian National Instrument 43-101, Standards of Disclosure for Mineral Projects, and has reviewed and approved the content of this disclosure.

TSX.V: LG | OTCQB: LGCXF

LAHONTANGOLDCORP.COM