

The background features several thin, parallel, wavy lines in a golden-yellow color that sweep across the slide from the bottom left towards the top right.

LG
LAHONTAN
GOLD CORP

TSX.V: LG | OTCQB: LGCXF

Presentation: *June 1, 2026*

***Nevada's Santa Fe Gold Mine:
On Track to Production***

Disclaimers

Information Contained In This Presentation

This presentation (the "**Presentation**") has been prepared by Lahontan Gold Corp. (the "**Company**") solely for informational purposes. None of the Company, its affiliates or any of their respective employees, directors, officers, contractors, advisors, members, successors, representatives or agents makes any representation or warranty as to the accuracy or completeness of any information contained in this Presentation and shall have no liability for any representations (expressed or implied) contained in, or for any omissions from, this Presentation. This Presentation shall not constitute an offer, nor a solicitation of an offer, of the sale or purchase of securities. This Presentation does not constitute an offering of securities of the Company and under no circumstances is it to be construed as a prospectus or advertisement or public offering of securities.

No securities regulatory authority or similar authority has reviewed or in any way passed comment upon the document or the merits of the Company's securities and any representation to the contrary is an offence. Except where otherwise indicated, the information contained in this Presentation has been prepared by the Company and is given as of the date hereof. The delivery of this Presentation shall not imply that the information herein is correct as of any date after the date hereof.

Market and Industry Data

This Presentation includes market and industry data that has been obtained from third party sources, including industry publications. The Company believes that the industry data is accurate and that the estimates and assumptions are reasonable, but there is no assurance as to the accuracy or completeness of this data. Third party sources generally state that the information contained therein has been obtained from sources believed to be reliable, but there is no assurance as to the accuracy or completeness of included information. Although the data is believed to be reliable, the Company has not independently verified any of the data from third party sources referred to in this Presentation or ascertained the underlying economic assumptions relied upon by such sources. References in this Presentation to reports and publications should not be construed as depicting the complete findings of the entire referenced report or publication. The Company does not make any representation as to the accuracy of such information.

Cautionary Note Regarding Forward-looking Information

This Presentation contains "forward-looking information" within the meaning of applicable Canadian securities laws. Forward-looking information includes, but is not limited to, information with respect to the Company's strategy, plans or future financial or operating performance, and advancements at the Company's properties; Any expectations with respect to defining mineral resources or mineral reserves on any of the project's any expectation with respect to any permitting, development or other work that may be required to bring any of the projects into production; any expectation that any of the projects can be brought back into production rapidly or expeditiously; any expectations as to future exploration potential for any of the projects; any expectation as to the outcome or success of any proposed programs for any of the projects; any expectation that market conditions will warrant future production from any of the projects; statements with respect to the transaction (the "Transaction") with Energy Fuels Inc. ("Energy Fuels"), the timing of closing of the Transaction and the impact on the Company's operations; any expectation that any future production payments will become due and payable and be paid. Generally, but not always, forward looking information and statements can be identified by the use of words such as "plans", "expects", "is expected", "budget", "scheduled", "estimates", "forecasts", "intends", "anticipates", or "believes" or the negative connotation thereof or variations of such words and phrases or statement that certain actions, events or results "may", "could", "would", "might" or "will be taken", "occur" or "be achieved" or the negative connotation thereof.

Forward-looking information is based on the Company's current expectations, beliefs, assumptions, estimates and forecasts about the Company's business and the industry and markets in which it operates. Such forward information and statements are based on numerous assumptions, including among others, the availability of financing, the accuracy of previous exploration records and results, that the results of planned exploration activities are as anticipated, the cost of planned exploration activities, that third party contractors, equipment and supplies and governmental and other approvals required to conduct the Company's planned exploration and development activities will be available on reasonable terms and in a timely manner and that general business and economic conditions will not change in a material adverse manner. Although the assumptions made by the Company in providing forward looking information or making forward-looking statements are considered reasonable by management at the time, there can be no assurance that such assumptions will prove to be accurate.

Forward-looking information and statements also involve known and unknown risks and uncertainties and other factors, which may cause actual results, performances and achievements of the Company to differ materially from any projections of results, performances and achievements of the Company expressed or implied by such forward-looking information or statements. These factors include receipt of certain regulatory approvals in connection with the completion of the Transaction; the satisfaction of closing conditions; potential conflicts of interest between the Company and Energy Fuels; the costs associated with bringing any of the projects back into production; risks that historical mineral estimates can be updated and be verified to be current mineral resources or Mineral Reserves; permitting and regulatory delays; litigation risks; competition from others; market factors, including future demand for and prices realized from the sale of uranium and vanadium; government actions that could restrict or eliminate the ability to mine on public lands, such as through the creation or expansion of national monuments or through mineral withdrawals; the policies and actions of foreign governments, which could impact the competitive supply of and global markets for uranium and vanadium; the Company's expectations in connection with the production and exploration, development and expansion plans at the projects discussed herein being met; changes in national and local government legislation, taxation, controls or regulations and/or changes in the administration or laws, policies and practices; the impact of general business and economic conditions; fluctuating metal prices; currency exchange rates; the impact of inflation; general risks of the mining industry; failure of plant, equipment or processes to operate as anticipated; unanticipated results of future studies; seasonality and unanticipated weather changes; success of exploration activities, permitting timelines, government regulation; environmental risks; unanticipated reclamation expenses; and/or title disputes or claims.

Although the Company has attempted to identify important factors that could cause actual actions, events or results to differ materially from those contained in the forward-looking information or implied by forward-looking information, there may be other factors that cause results not to be as anticipated, estimated or intended. There can be no assurance that forward-looking information and statements will prove to be accurate, as actual results and future events could differ materially from those anticipated, estimated or intended. Accordingly, readers should not place undue reliance on forward-looking statements or information. The Company undertakes no obligation to update or reissue forward-looking information as a result of new information or events except as required by applicable securities laws.

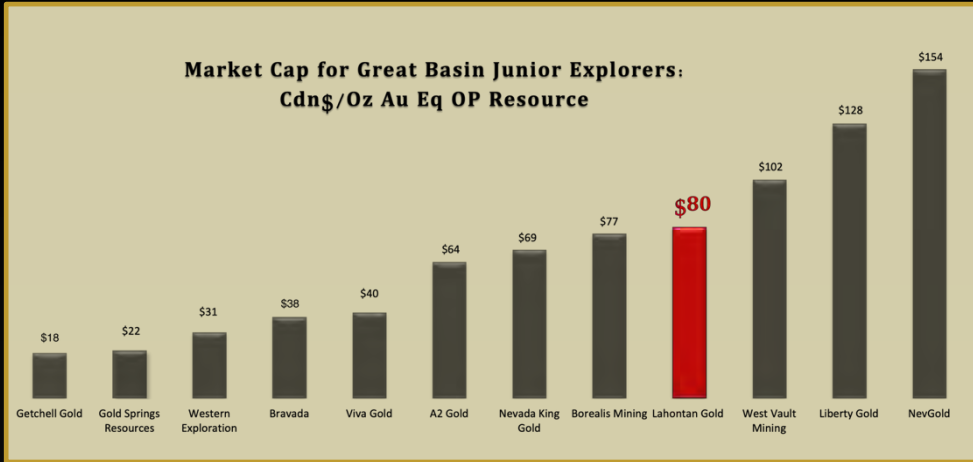
The footnotes, endnotes and appendices to this Presentation contain important information.

The Technical information in this presentation has been reviewed and approved by Brian J. Maher, M.Sc., CPG-12342, the Vice President of Exploration for Lahontan Gold Corp, who is a Qualified Person as the term is defined in NI 43-101.



TSX.V-LG; OTCQB-LGCXF-Y2F

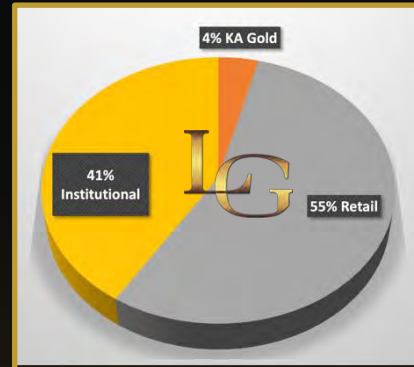
Average is \$69MC per resource ounce LAHONTAN CORPORATE SNAPSHOT



SHARE STRUCTURE		
Shares Issued and Outstanding	(Shares)	432.3M
Market Capitalization (April 2026)	(C\$M)	Basic: \$172.9M FD: \$192.4M
Warrants		27.1M @ Ave 45 cents
Options		30.5M @ 22 cents
Cash	(C\$M)	\$19.3M
Debt	(C\$M)	\$0

KEY SHAREHOLDERS:

- KA GOLD (Founders)
- MERK
- EMA (Larry Lepard)
- APAC
- PALOS



NEWSLETTER WRITERS

- Brien Lundin
- Jay Taylor
- Don Durrett

ANALYST & BANKING SUPPORT



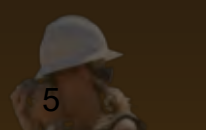
LAHONTAN REVALUATION UNDERWAY UP 7X YTD

- Huge trading volumes equals
HUGE liquidity: (30 Days)

Canada: 2.6 M shares/day
US: 0.7 M shares/day
TOTAL VOL: 3.3 M shares/day



Slab Complex looking west



MANAGEMENT & BOARD



KIMBERLY ANN, FOUNDER
EXECUTIVE CHAIR, CEO, PRESIDENT



BRIAN MAHER, FOUNDER
VICE PRESIDENT – MINE DEVELOPMENT & EXPLORATION



JOHN MCNEICE
CHIEF FINANCIAL OFFICER



MIRANDA WERSTIUK
INDEPENDENT DIRECTOR



EVAN PELLETIER
INDEPENDENT DIRECTOR



ANTONY ROWE
INDEPENDENT DIRECTOR



SHANE WILLIAMS
INDEPENDENT DIRECTOR



WALKER LANE, NEVADA

CHECKING ALL THE BOXES

✓ NEVADA

- # 1 Jurisdiction in the USA
- Straight-forward permitting

✓ SIZE & SCALE

- 1.95 Million Ounces & Growing*
- District scale land package
- Multi million-ounce district

✓ EXCELLENT INFRASTRUCTURE

- Year-round access, substation on site, access to three water wells
- Adjacent to an operating mine

✓ PAST PRODUCER

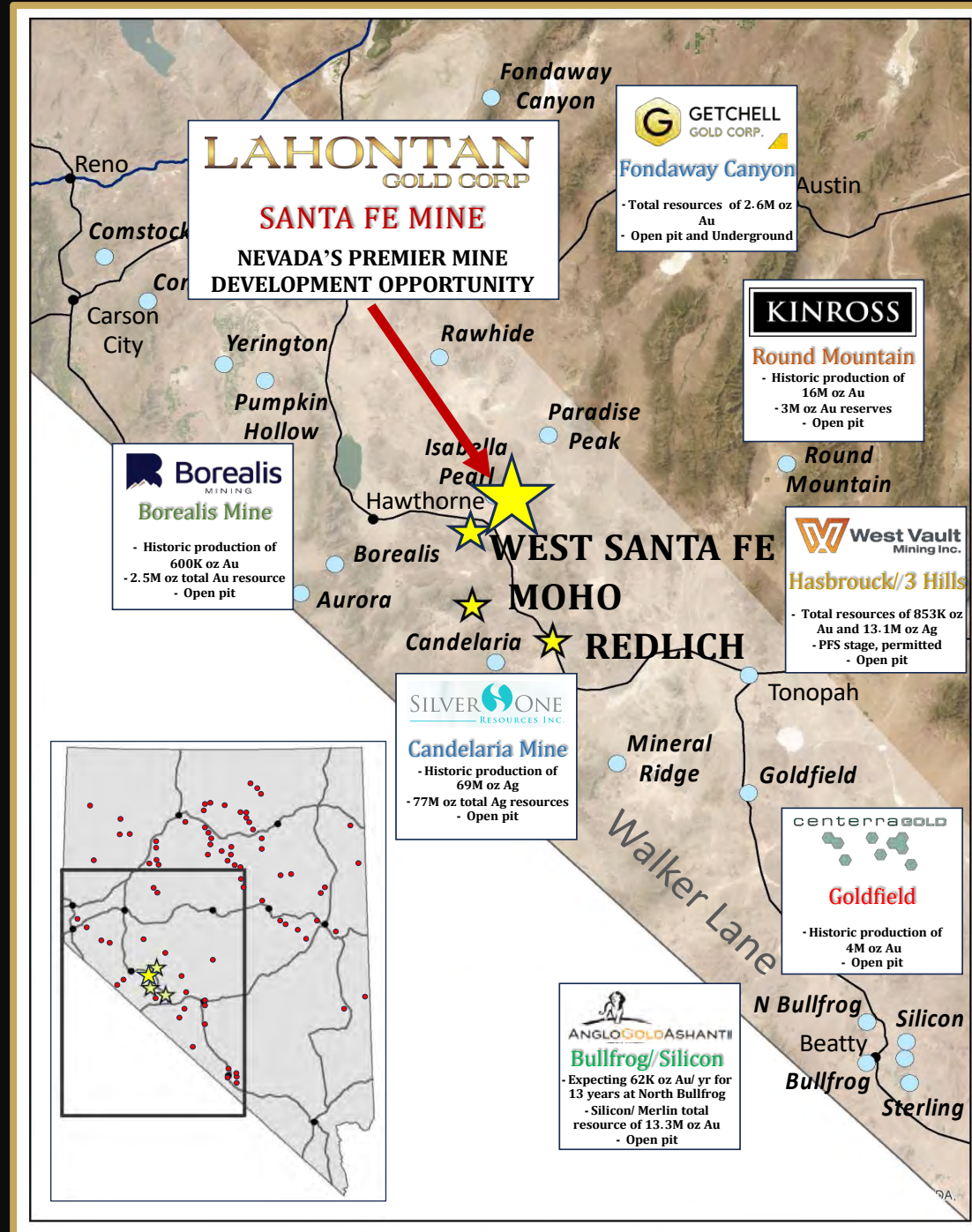
- Santa Fe was mined from 1988-1994 by Corona Gold
- LG on track to Production, permitting well underway

✓ BACK TO PRODUCTION

- Estimated timeline to production: 2027

*Please see Santa Fe Project Technical Report for detailed Mineral Resource Estimate.

TSX.V-LG; OTCQB-LGCXF; FSE-Y2F



LARGE-SCALE GOLD OXIDE DEPOSITS WALKER LANE, NEVADA USA

GOLD & SILVER ASSETS IN THE WALKER LANE



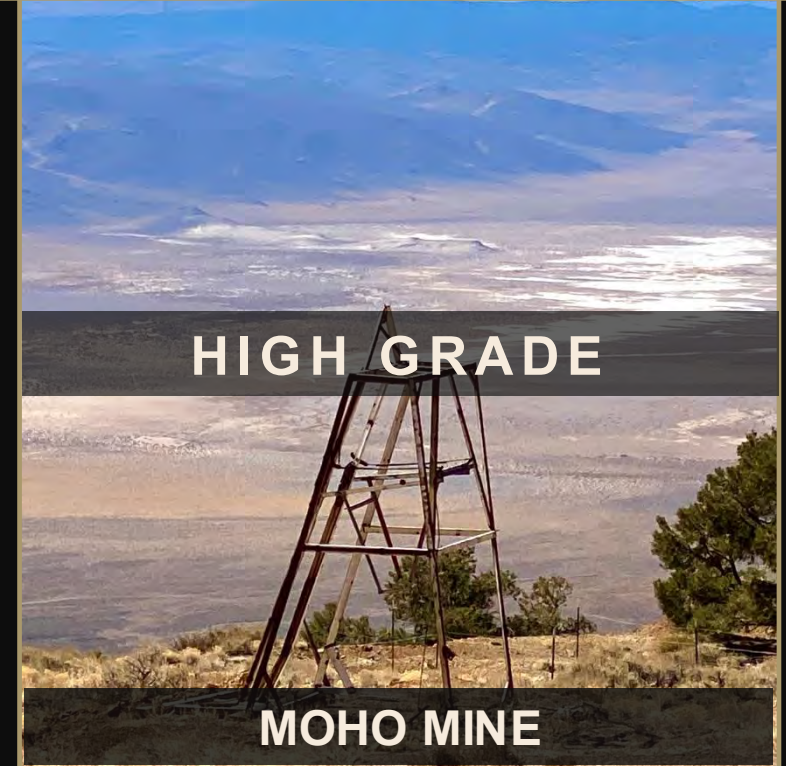
PAST PRODUCER

- OPEN PIT, HEAP LEACH GOLD & SILVER
- US\$472M POST TAX NPV^{5*}



SATELLITE ASSET

- OXIDE STARTS AT THE SURFACE
- ONLY 13 Km AWAY FROM OUR FLAGSHIP

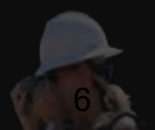


GOLD & SILVER

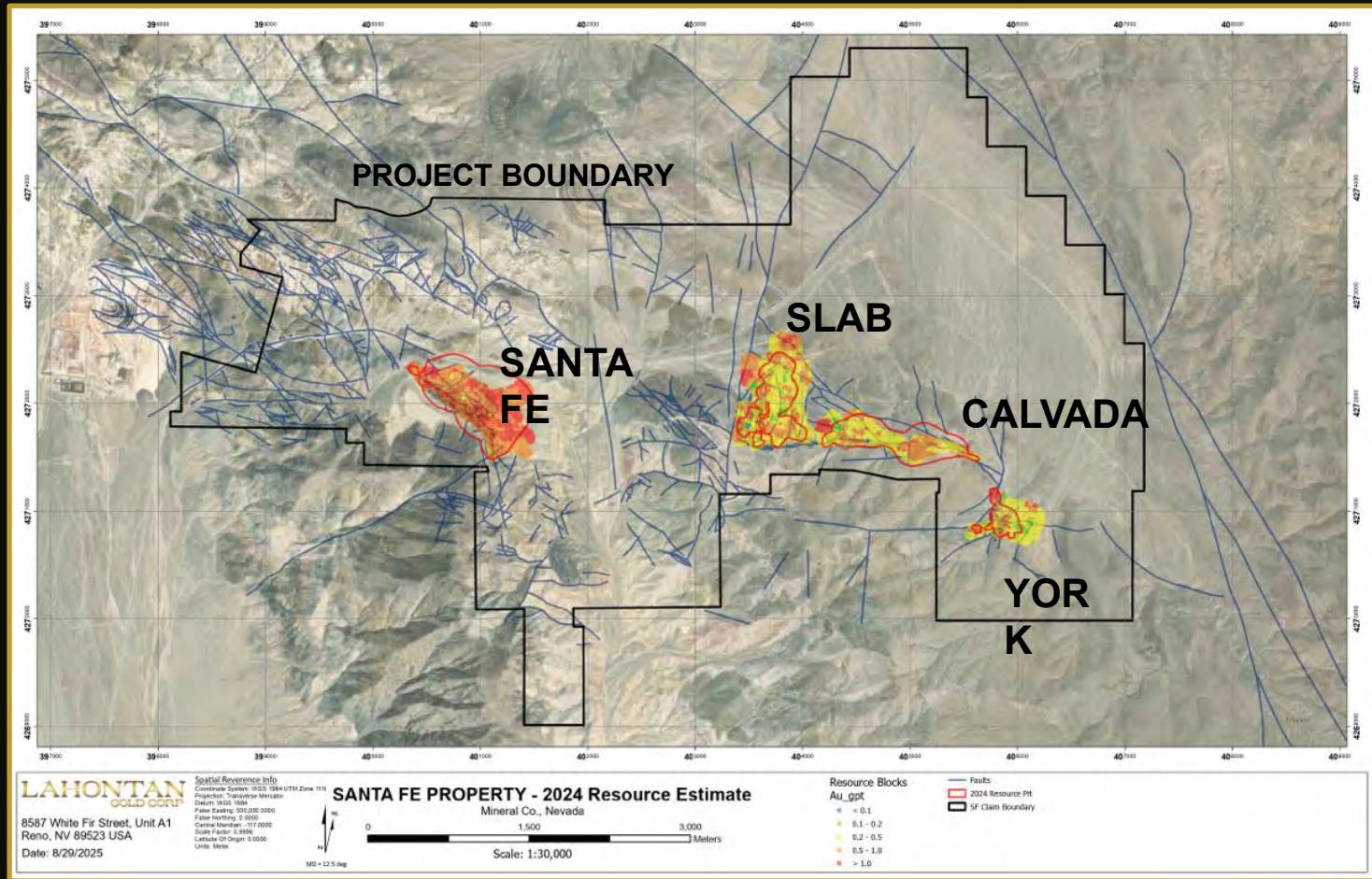
- MULTIPLE VEIN SYSTEM
- HISTORIC GRADES 25 g/t GOLD & 300 g/t SILVER

* The cash flow results for gold prices of \$2025 and \$2705 are those contained in the "Preliminary Economic Assessment, NI 43-101 Technical Report, Santa Fe Project", Authors: Kenji Umemo, P. Eng., Thomas Dyer, PE, Kyle Murphy, PE, Trevor Rabb, P. Geo, Darcy Baker, PhD, P. Geo., and John M. Young, SME-RM; Effective Date: December 10, 2024, Report Date: January 24, 2025. The Technical Report is available on the Company's website and SEDAR+. For higher gold prices, the exact same mine plan, schedule, opex, and capex were used. Readers are cautioned that these results are speculative and have not been reviewed or approved by the

Technical Report QP(s).



UPDATED RESOURCE ESTIMATE: 1.54 MILLION OUNCES INDICATED AND 0.41 MILLION OUNCES INFERRED PIT CONSTRAINED RESOURCE*



- 1 AVERAGE GRADE 0.93 g/t Au Eq**
 - District scale land package > 28 km²
- 2 INDICATED AND INFERRED RESOURCES**
 - Occur in five separate deposits
 - Resource constrained by conceptual pits using a \$1950 gold price
- 3 OXIDE DOMAIN RESOURCES**
 - Indicated Au Eq oxide: 640,000 oz grading 0.68 g/t Au Eq*
 - Inferred Au Eq oxide: 219,000 oz grading 0.53 g/t Au Eq*
- 4 HISTORIC PRODUCTION BREAKDOWN**
 - 359,202 ounces Au
 - 702,067 ounces of Ag with 1.1 g/t Au Eq average grade

SANTA FE LAND PACKAGE, GOLD & SILVER

*Please see Santa Fe Project Technical Report for detailed Mineral Resource Estimate.

RESOURCES

TSX.V-LG; OTCQB-LGCXF; FSE-Y2F



WHAT TO KNOW

SANTA FE DEPOSIT SIGNIFICANT OXIDE REMAINING IN HIGH- WALL

SANTA FE DEPOSIT

1 SANTA FE PIT OXIDE

- Significant oxide & transition left to be mined
- 0.70 g/t oxide gold with low strip*

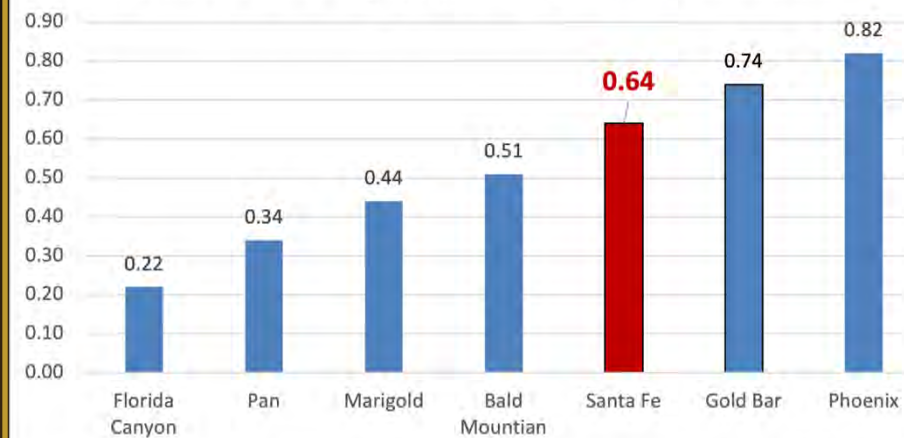
2 COMPETENT WALL ROCK

- 50-degree pit slopes
- Mineralization crops out in the pit bottom and high-wall

3 OVERALL OXIDE GRADE AMONG HIGHEST IN NEVADA*



Oxide Au Grade (g/t) Operating HL Mines in Nevada



100% Controlled
SANTA FE MINE
PATHWAY TO PRODUCTION



SANTA FE PIT

ROUTE TO SUBSTATION

ROAD ACCESS
POWERLINE TO SUBSTATION ON LG
PROPERTY

SLAB-CALVADA COMPLEX

PIT EXPANSION

SANTA FE MINE PEA*: LOW CAPEX, LOW COST, RAPID PAYBACK

WALKER LANE, NEVADA USA

Study published in December 2024 Done with \$1950 Pit shells

- Capex of US\$135 M including a 20% contingency
- 12,500 tpd, 8 year project life
- **Low cash costs**
- **Excellent NPV, IRR**
- **Rapid payback**

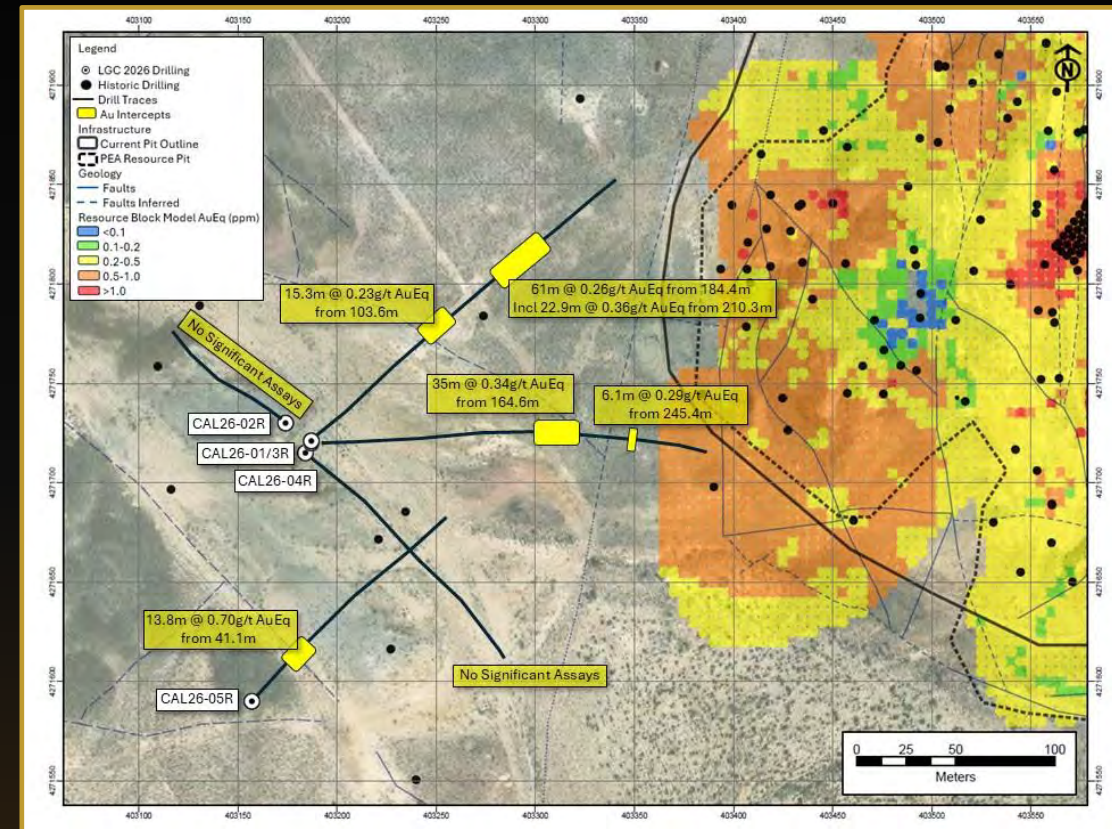
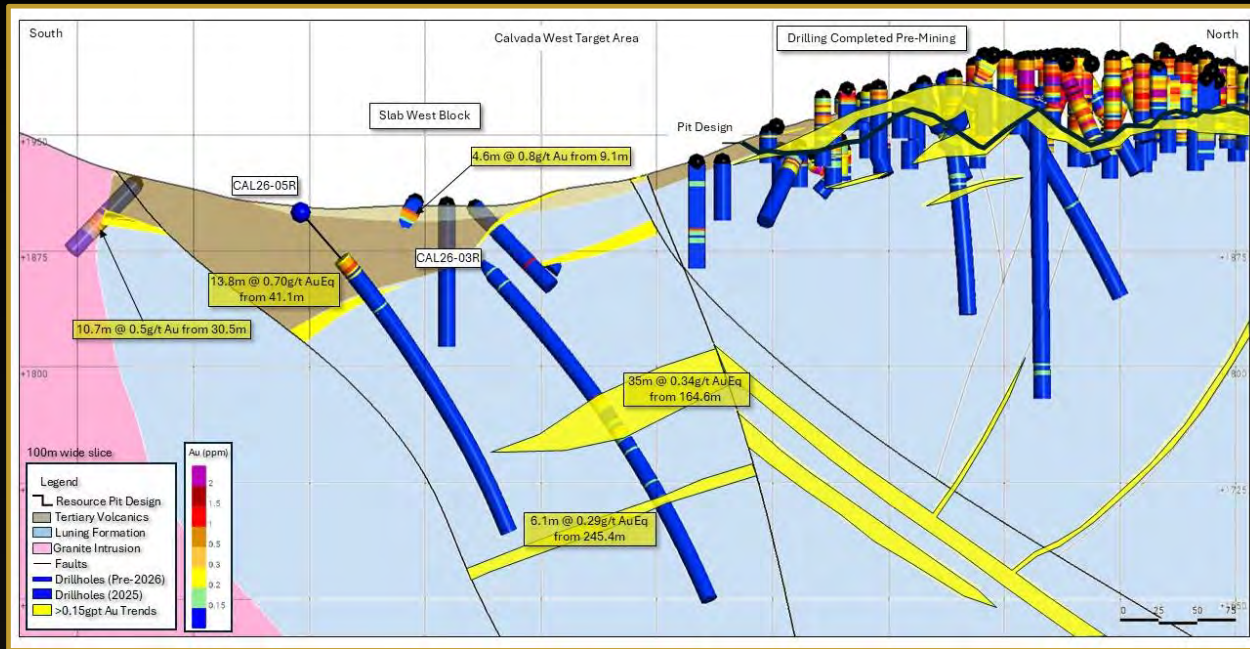


Au Price (US\$)	Ag Price (US\$)	NPV ⁵ Post Tax (M US\$)	IRR Post Tax (%)	Payback (Yrs)
\$2025	\$24.2	\$56.5	14.0%	4.2
\$2705	\$32.6	\$200.0	34.2%	2.9
\$3,000	\$37.5	\$263.2	42.2%	2.6
\$3,500	\$43.8	\$368.0	54.8%	2.1
\$4,000	\$49.5	\$471.6	66.6%	1.8

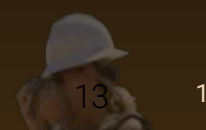
* The cash flow results for gold prices of \$2025 and \$2705 are those contained in the "Preliminary Economic Assessment, NI 43-101 Technical Report, Santa Fe Project", Authors: Kenji Umeno, P. Eng., Thomas Dyer, PE, Kyle Murphy, PE, Trevor Rabb, P. Geo, Darcy Baker, PhD, P. Geo., and John M. Young, SME-RM; Effective Date: December 10, 2024, Report Date: January 24, 2025. The Technical Report is available on the Company's website and SEDAR+. For higher gold prices, the exact same mine plan, schedule, opex, and capex were used. Readers are cautioned that these results are speculative and have not been reviewed or approved by the Technical Report QP(s).



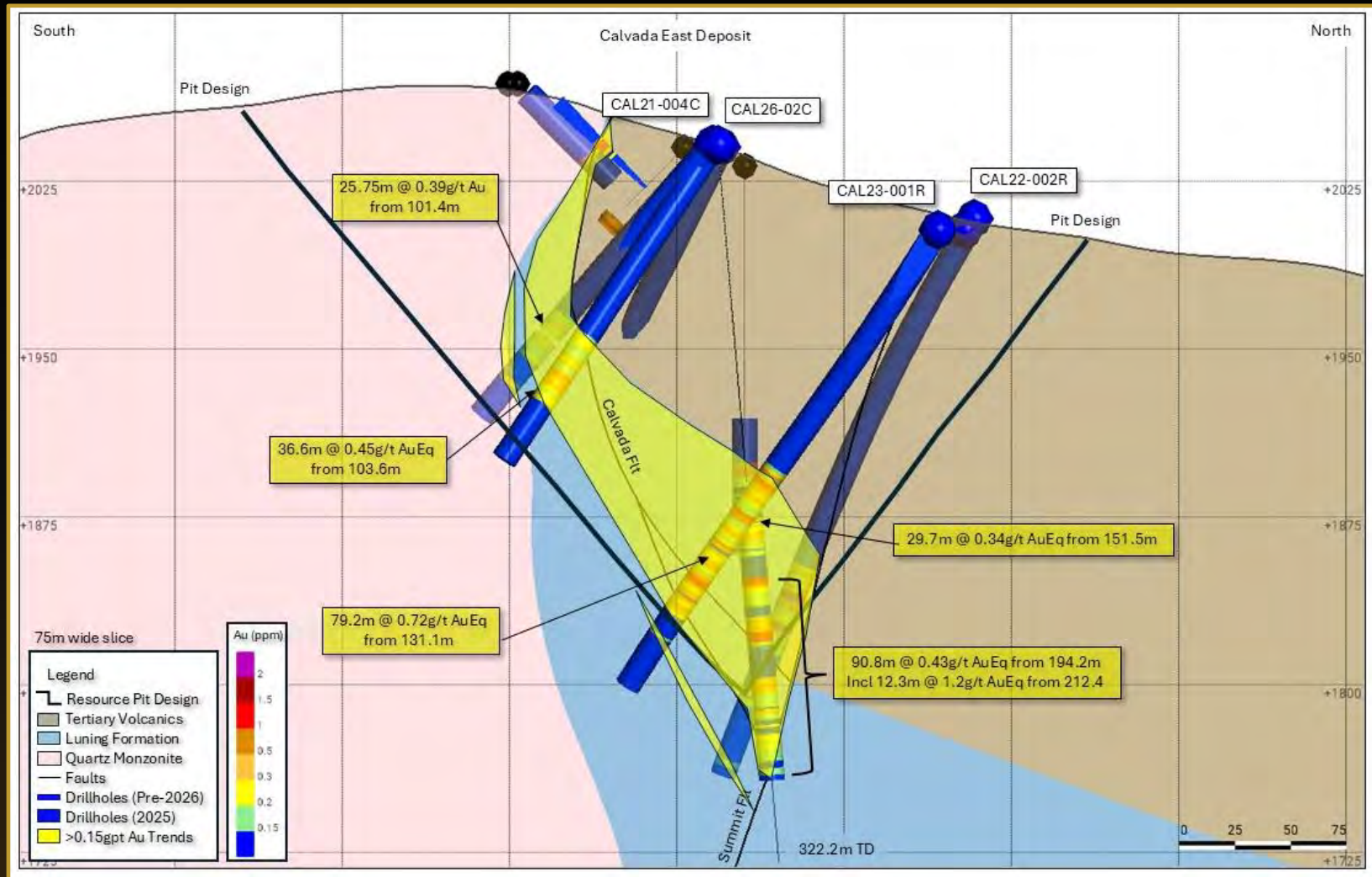
NEW WEST SLAB GOLD DISCOVERY



- NEW GOLD ZONE DISCOVERED AT WEST SLAB IN 2026 DRILLING
- 35.0 metres grading 0.34 g/t Au Eq (CAL26-03R; 164.6 – 199.6 m) and 61.0 metres grading 0.26 g/t Au Eq (CAL26-01R; 184.4 – 245.4 m)
- Unconstrained up and down dip plus along strike , EXCELENT POTENTIAL FOR NEW GOLD RESOURCES
TSX.V-LG; OTCQB-LGCXF; FSE-Y2F



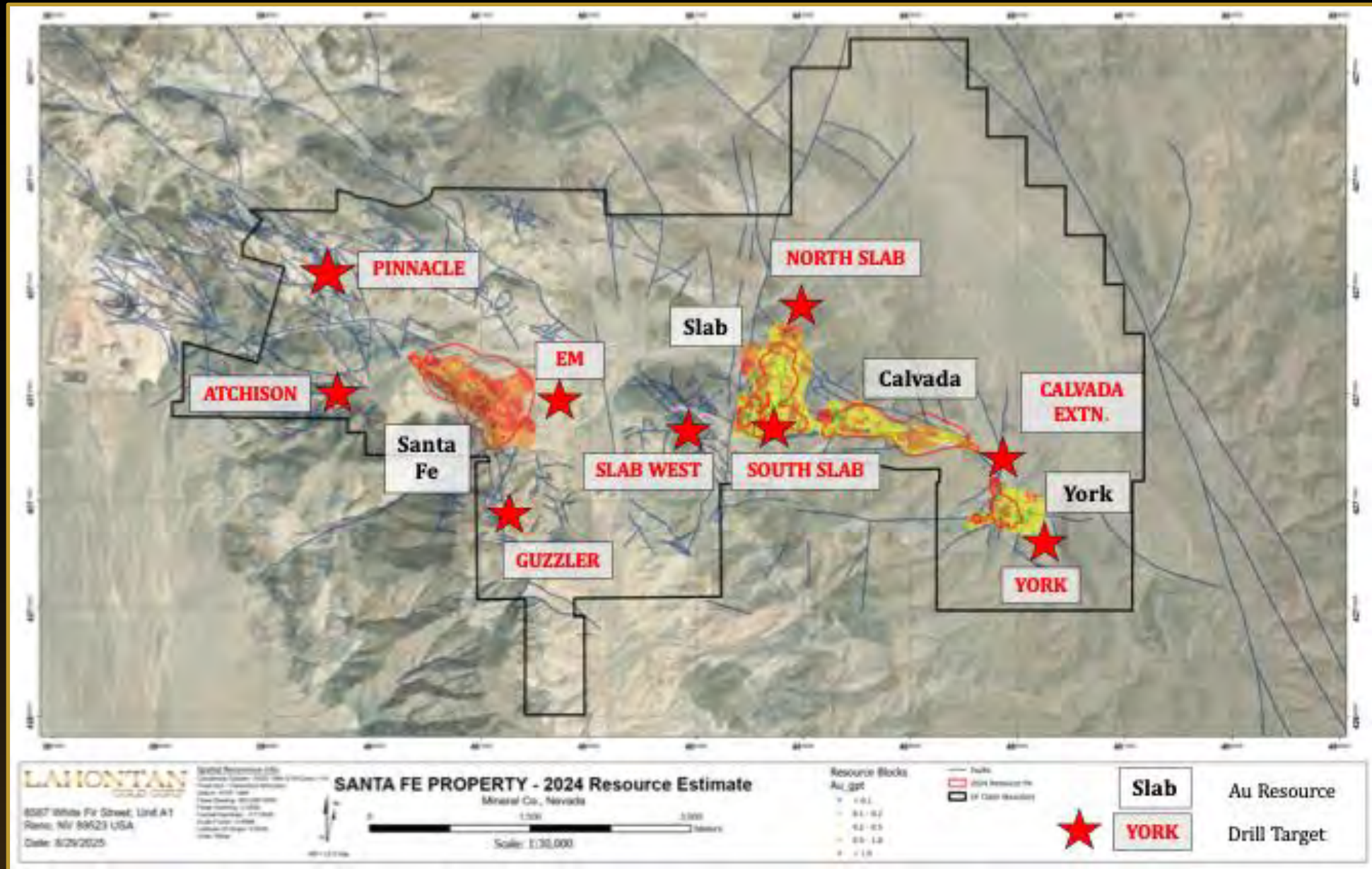
CALVADA 2026 DRILL RESULTS



- Core drill holes originally designed to gather data for mine permitting
- Drill hole CAL26-02C, cut **90.8 metres (194.2 – 285.0 m) grading 0.44 g/t Au Eq oxide**
- Intercept is near the bottom and below the current resource pit shell.
- Confirms expansion potential of the Calvada deposit



SANTA FE EXPLORATION UPSIDE

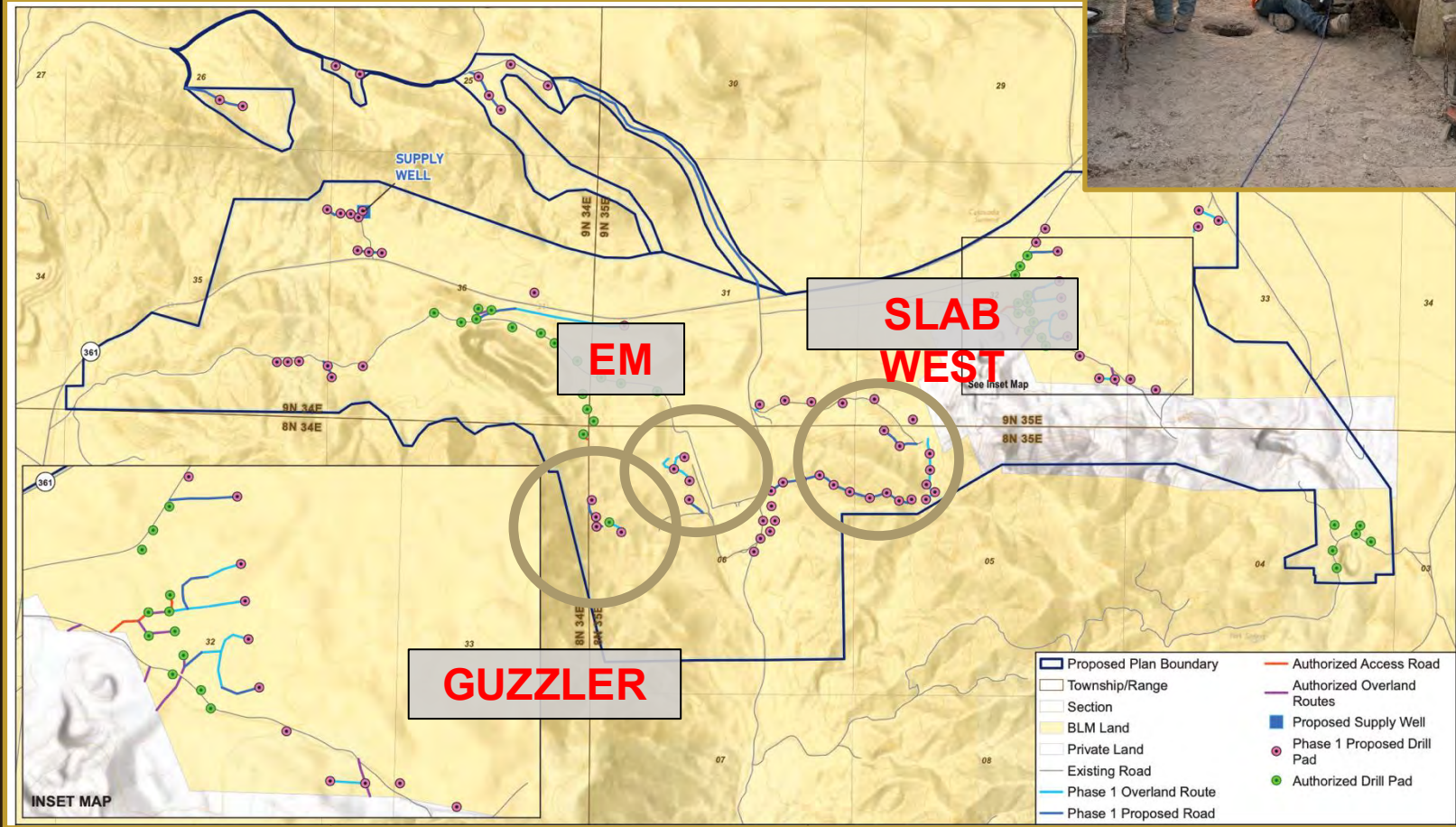


SANTA FE EXPLORATION CAMPAIGN 2026

- **RC PROGRAM**
 - 10,000 metres planned NEW Exploration targets including:
 - West Slab
 - EM
 - Guzzler

- **CORE PROGRAM**
 - 2023 metres (8 holes) focused on rock characterization studies, as well as defining water table for mine permit

- **SONIC PROGRAM**
 - 1740 metres (96 holes)
 - Focused on adding ounce to our mine life by drilling historic heap leach pads



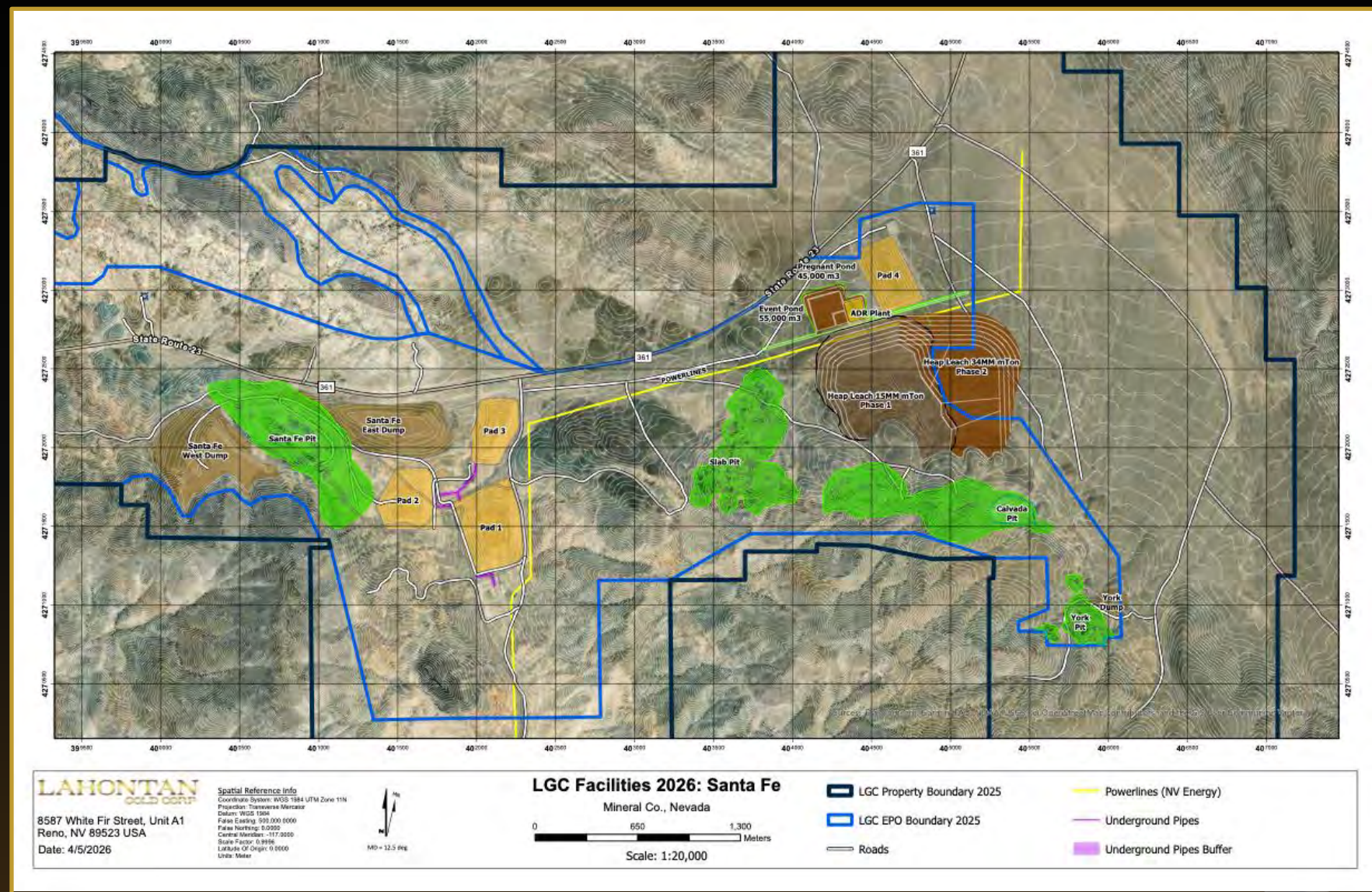
CORE PROGRAM & KEY OBJECTIVES

- 1 COMPLETED 8 CORE HOLES TOTTALLING 2023 METRES TO SUPPORT MINE PERMIT
- 2 COLLECT SAMPLES FOR WASTE ROCK CHARACTERIZATION
- 3 LOCATE (IF POSSIBLE) GROUNDWATER SURFACE AND PLACE PIEZOMETERS – COMPLETED!!!



SANTA FE MINE- PATH WAY TO PRODUCTION MINE PLAN OF OPERATION PERMIT

- **Mine POO**
 - Regulated by BLM, runs in parallel to Exploration POO, covers siting of mine facilities
- **Mine Plan:**
 - 12,500 tpd,
 - three-stage crush, conveyor loading
- **Conventional CN heap leach**
 - Doré produced on site
- **Targeting expanded production profile in updated PEA Q3 2026**



WEST SANTA FE

A FOCUS FOR RESOURCE GROWTH IN 2025

WEST SANTA FE OXIDE OXIDE OXIDE



WHAT TO KNOW WEST SANTA FE

1

LOCATION LOCATION LOCATION

- Located only 13 km west of the Flagship Santa Fe Mine
- District scale land package 19 km²

2

SIGIFICANT HISTORIC DATABASE

- Outlines a shallow oxide Au & Ag deposit of 0.5-1.0M ounces starting at surface*

3

SANTA FE LOOK-A-LIKE

- Open-pit mining configuration with low-cost potential as a satellite to Santa Fe

4

LOW-COST OPTION AGREEMENT TO ACQUIRE 100% OF THE PROPERTY

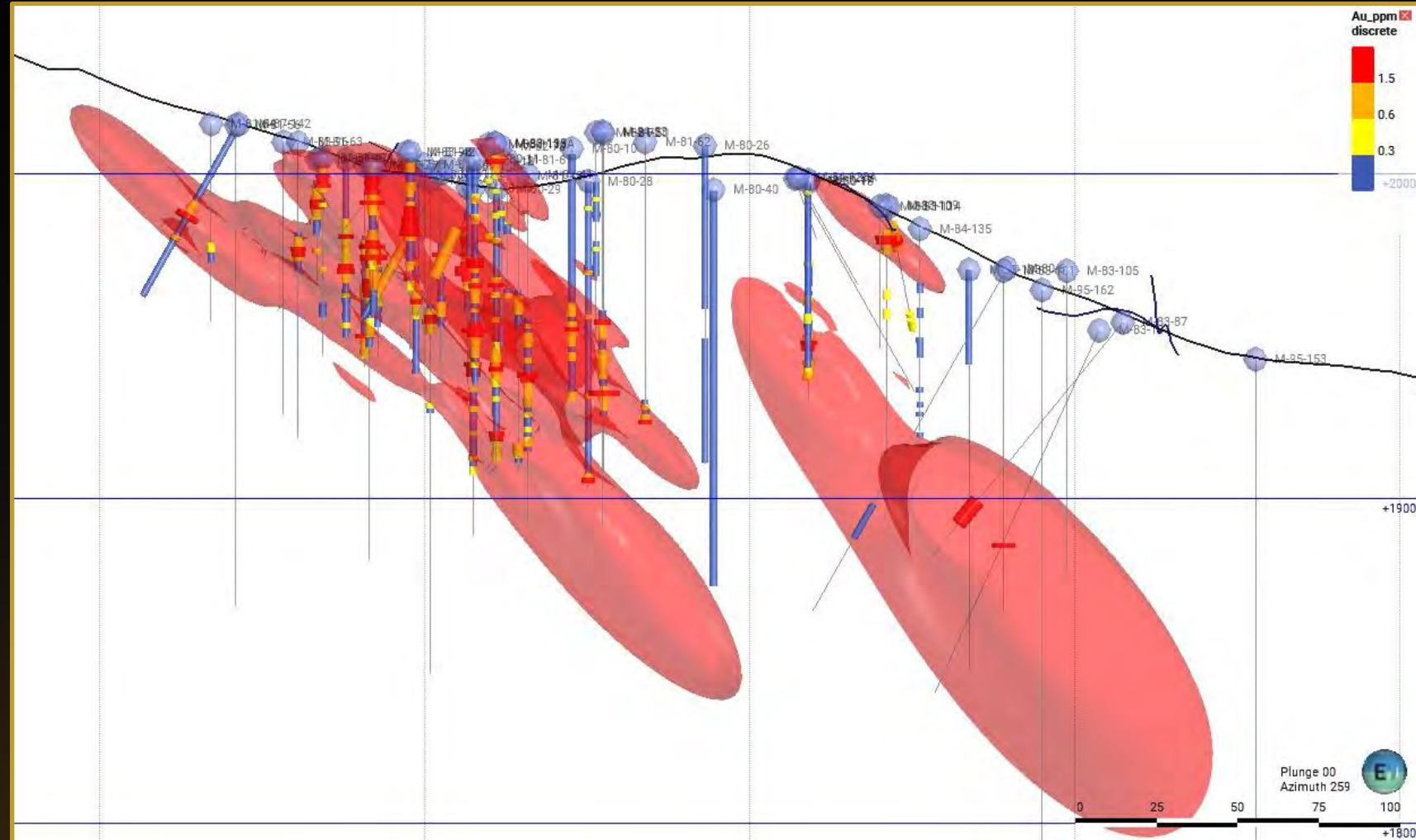
- Back-end loaded payments for seven years can be made with combination of shares and cash
- Total buyout \$1.8M
- Total expenditures over seven years \$1.4M sufficient to define maiden mineral resource estimate

*The exploration target at West Santa Fe is conceptual in nature and is based on the size of the known mineralized zones, and gold and silver grades from historical drilling. The qualified person has not completed sufficient work to verify the historical information on West Santa Fe and this information should not be relied on.

WHAT TO KNOW EXCELLENT RESOURCE GROWTH POTENTIAL

WEST SANTA FE

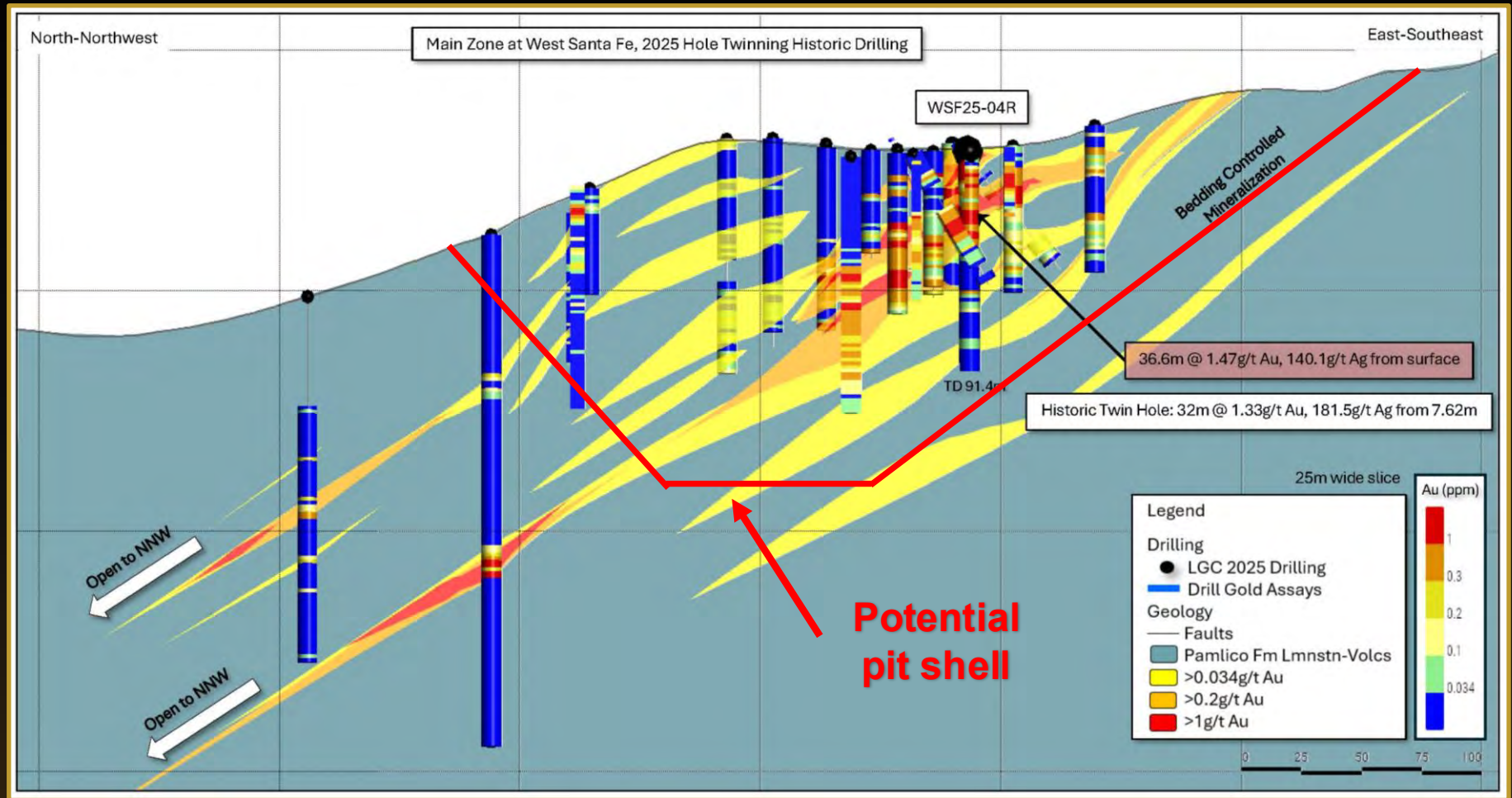
- 1 **HISTORIC DRILLING**
 - Au & Ag begins at surface
 - Mineralization continues down-rake
 - **All Oxide!!!**
- 2 **0.31 G/T AU SHELL OUTLINE**
 - Look alike to Santa Fe
 - Possible low-cost satellite operation
 - Historic drilling defines a large Au & Ag mineralized system*
- 3 **CURRENT DRILL PROGRAM**
 - Completed six drill holes in December, more planned in 2026
- 4 **EXCELLENT METALLURGY**
 - Column leach testing by KCA in the 80's showed 70% recovery for Au, 50% for Ag



*The exploration target at West Santa Fe is conceptual in nature and is based on the size of the known mineralized zones, and gold and silver grades from historical drilling. The qualified person has not completed sufficient work to verify the historical information on West Santa Fe and this information should not be relied on.

WEST SANTA FE RESULTS CONFIRM HISTORIC DRILLING

3.11 g/t Au Eq over 37m from the surface, OXIDE



RC cuttings with MnO_x dendrites:
high grade Ag, up to 648 g/t Ag

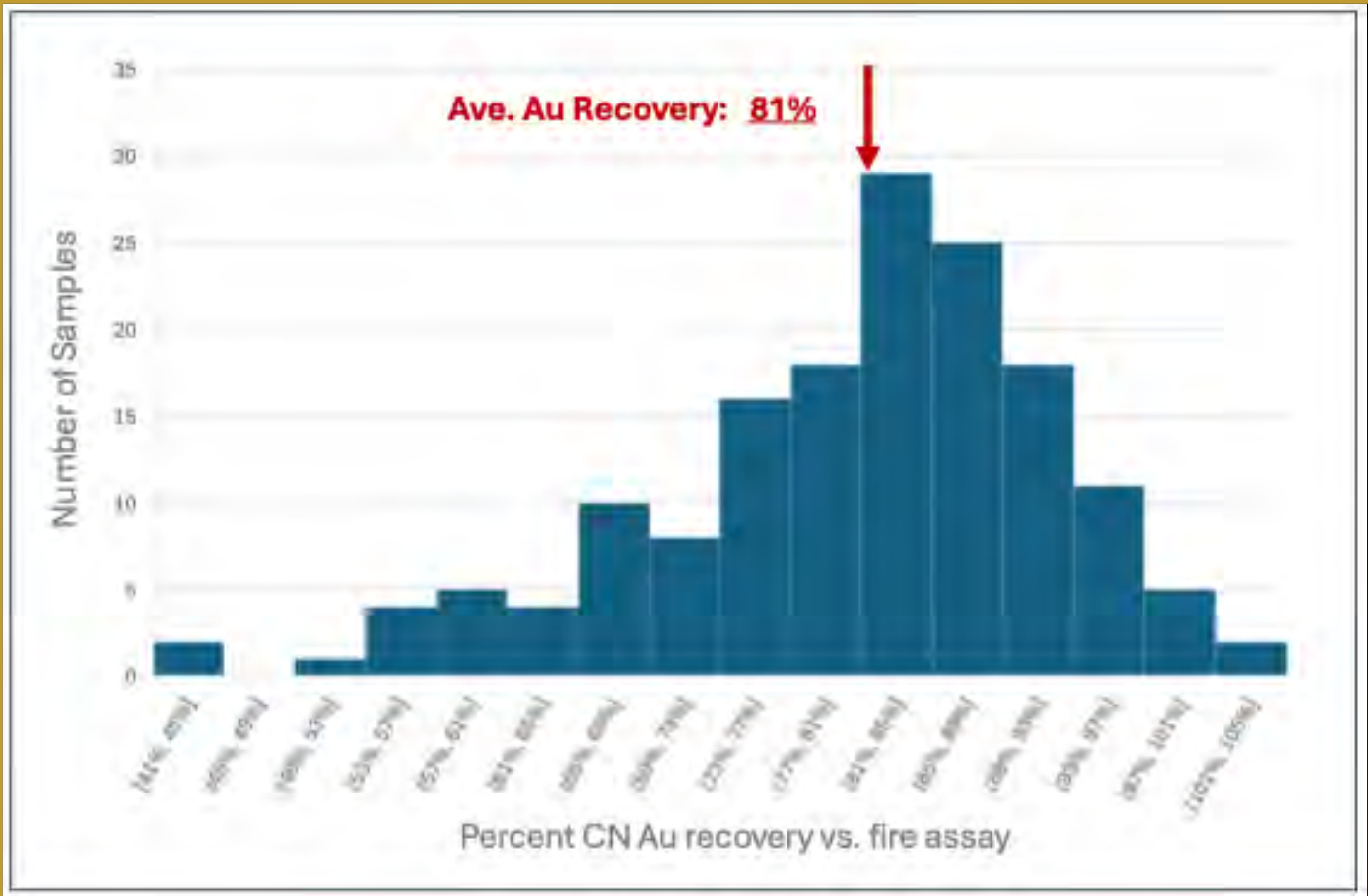
- **WSF25-04R: 36.6 metres grading 3.11 g/t Au Eq including 10.7 metres grading 5.75 g/t Au Eq from the surface, all oxide**

Intercepts up to 12.04 g/t Au Eq (4.48 g/t Au, 648 g/t Ag), clear open pit potential



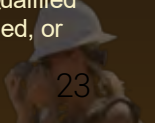
WEST SANTA FE-RECENT PRESS RELEASE CN ASSAY RESULTS CONFIRM METALLURGY

- 158 samples from 2025 RC drilling assayed for CN-extractable Au and Ag, mimicking Au and Ag recoveries in CN HL processing
- Kappes Cassiday (1982) had reported “a cyanide heap leach process will yield an overall recovery of 70% of contained Au and 50% of contained Ag”*
- **CN extractable Au averaged 81% and Ag averaged 60%, higher than predicted by KCA**

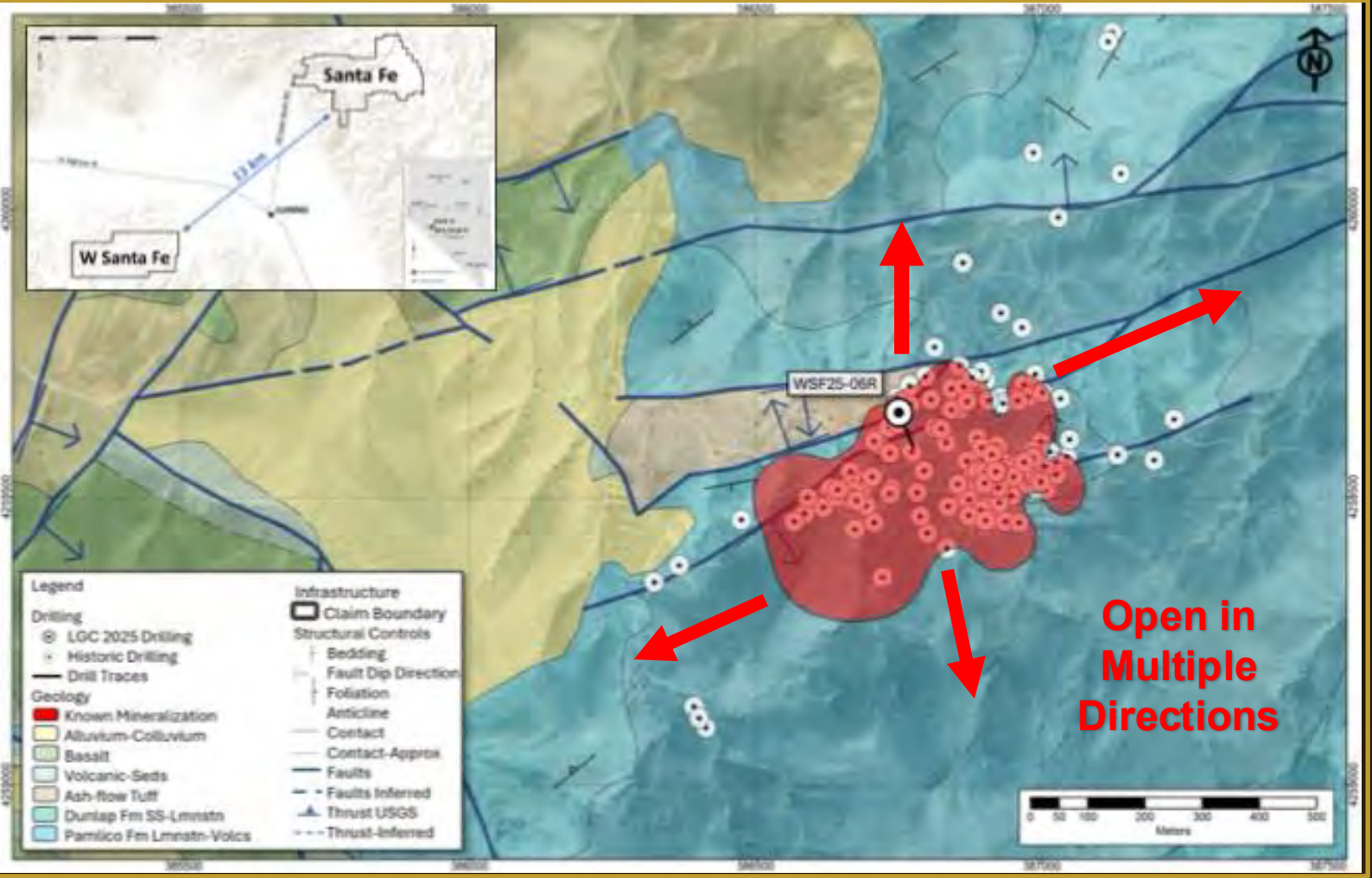


CN-extractable Au assays ranged from 41% to >100%

* The 1982 metallurgical results referenced above are historical in nature and were compiled from reports in the E & B Exploation archives. While these results suggest high recovery rates, a Qualified Person has not verified this data against modern standards. Therefore, these results should be considered illustrative of the potential of the property only and not relied upon as a current, verified, or representative estimate of recovery. The Company anticipates that additional metallurgical test work will be required to further verify the historic data.



WEST SANTA FE-DRILLING 2026



- Six twin holes completed in December 2026 confirm historic DH database
- Additional drilling to commence in Spring 2026
- In-fill, down-dip, and east-northeast extensions to be tested



LAHONTAN'S KEY MILESTONES & CATALYSTS

- ✓ PLAN OF OPERATION APPROVED
- ✓ DRILLING MULTIPLE TARGETS AT SANTA FE
- ✓ ADDING SONIC RIG FOR HL PAD DRILLING
- ✓ DRILL WEST SANTA FE Q2
- ✓ SANTA FE MINE PERMITTING ONGOING

- 1 CORE DRILLING AT SANTA FE TO SUPPORT MINE PERMITTING COMPLETED – MORE ASSAYS PENDING
- 2 SECOND PHASE WEST SANTA FE DRILLING IN Q2
- 3 RC STEP-OUT DRILLING AT SANTA FE UNDERWAY ASSAYS PENDING
- 4 SONIC CORE DRILLING OF HL PADS TO BEGIN LATE APRIL
- 5 UPDATED 43-101 MRE Q2 2026, PEA Q3 2026

